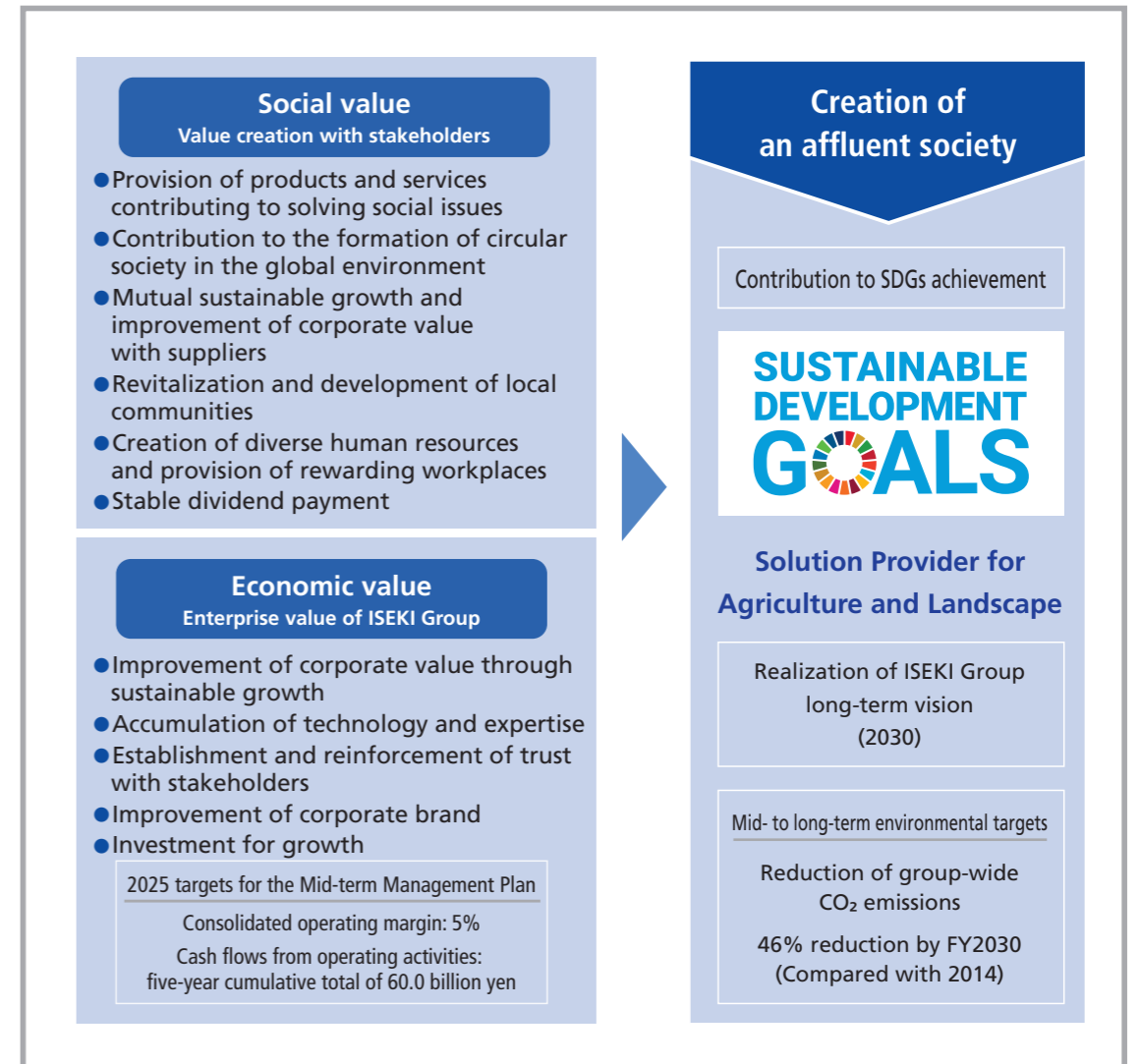
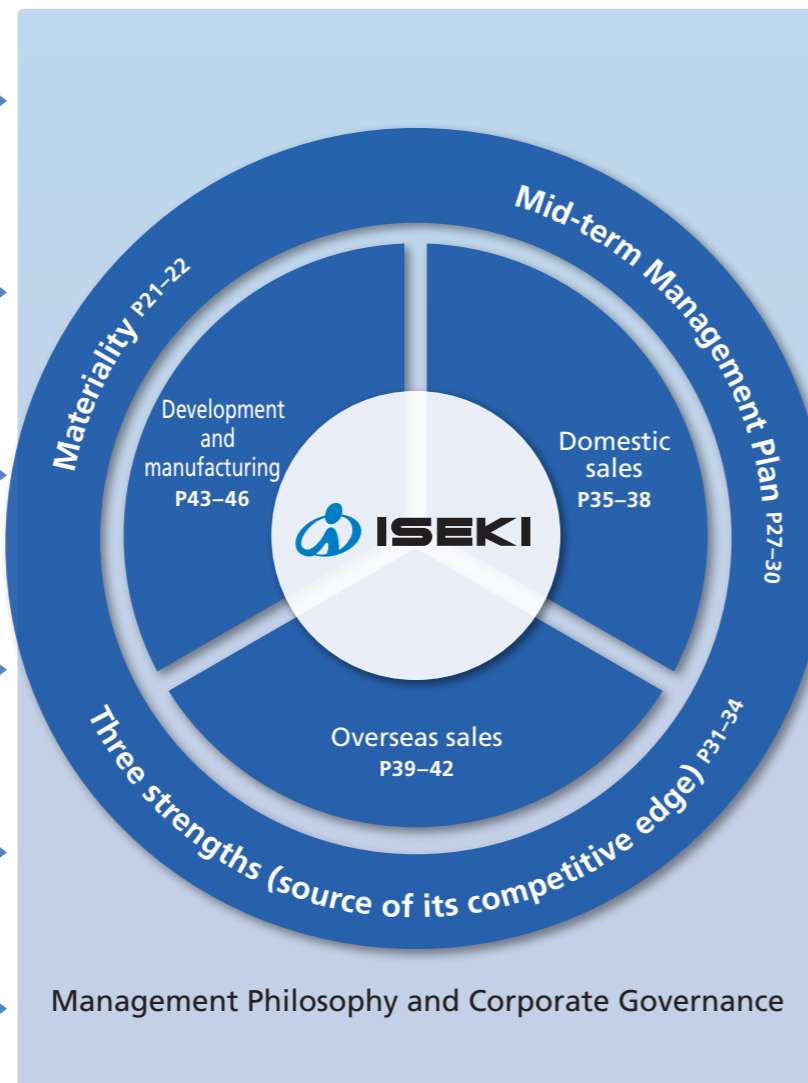
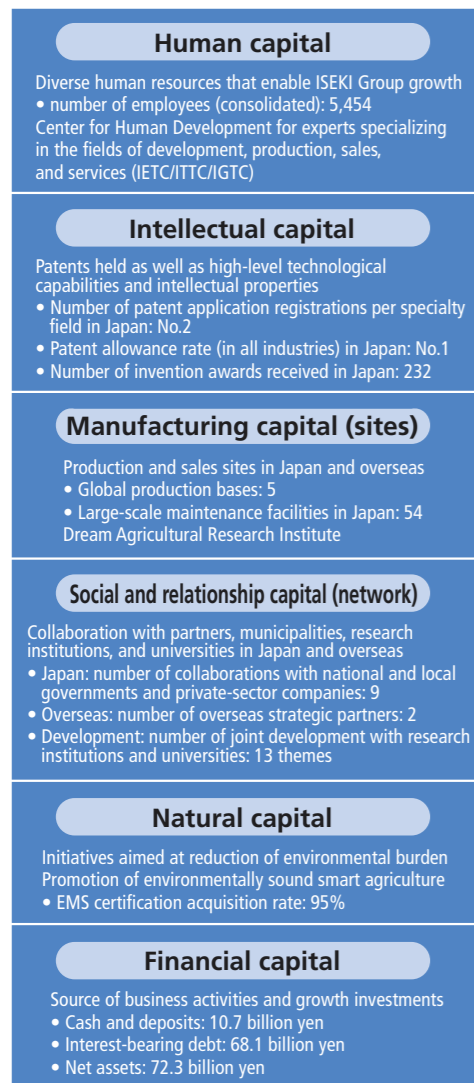
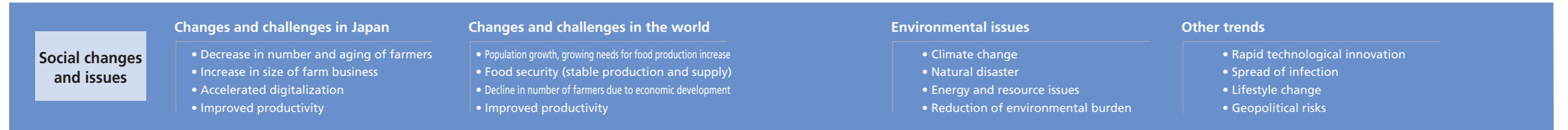


Value Creation Process

ISEKI Group engages in business activities that are founded on its corporate philosophy and governance and that leverage the capital supporting the Group as well as its unique strengths. In doing so, we provide customers with products and services that meet a variety of needs, thereby creating social and economic value. By addressing social changes and issues and reflecting them in the Mid-term Management Plans and materiality, and continuing this cycle of value creation, we strive to solve social issues and contribute to the "creation of a prosperous society," while achieving sustainable growth and enhancing corporate value of the Group.



Solving social issues and enhancing corporate value

through creation of social and economic value